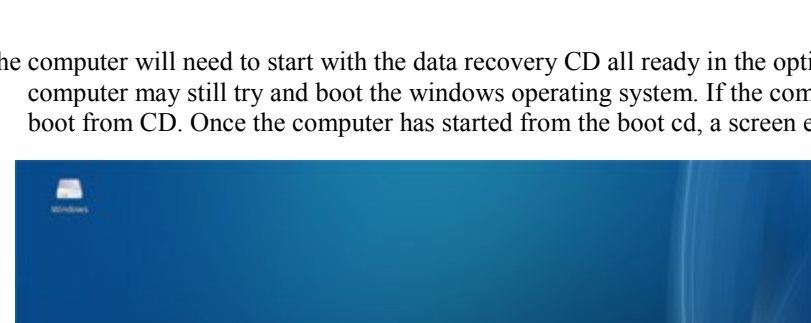


EZ93.com Data Recovery Boot Disk

The EZ93 Data Recovery CD is compatible with ALL Windows 32 bit & 64 bit operating systems (not just the ones shown below). Even if the system is password protected or you have a (BSOD) blue or black screen of death, this disk will give you access to all the files present on the hard disk or SSD.



The computer will need to start with the data recovery CD all ready in the optical device. Once the computer is started with the CD in the drive, your computer may still try and boot the windows operating system. If the computer does not boot from the CD then the system will need to be setup to boot from CD. Once the computer has started from the boot cd, a screen exactly like the picture below will be visible.



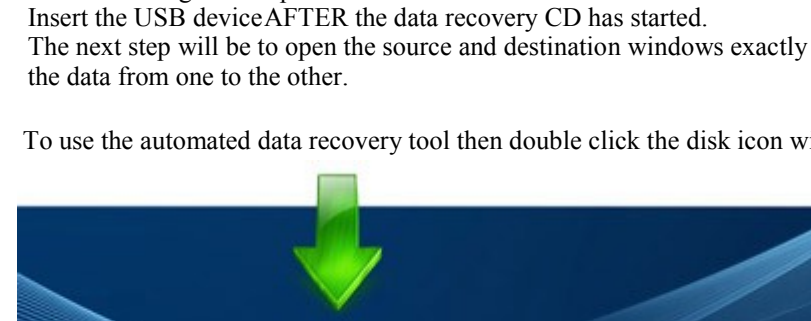
Data recovery can be carried out using either drag or drop exactly like windows or by using the data recovery program embedded in the cd.

**** Please note to protect the data all source devices are Read Only and cannot be used as the destination to save recovered data to ****

To use the drag and drop method a USB drive or external USB hard disk will be required to save the data to. Insert the USB device AFTER the data recovery CD has started.

The next step will be to open the source and destination windows exactly as you would in any other operating system and drag and drop the data from one to the other.

To use the automated data recovery tool then double click the disk icon with the red arrow on it at the bottom of the page.



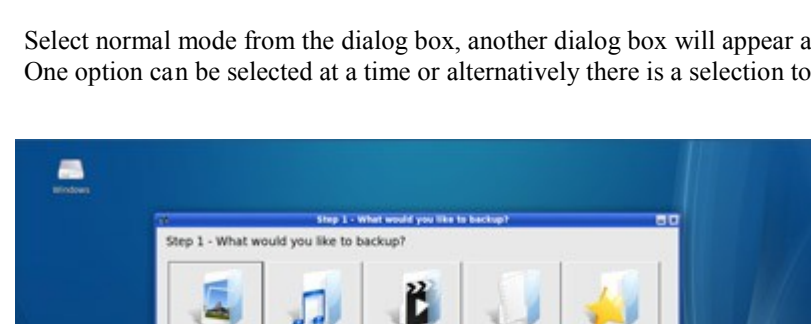
Once the application starts, there are two choices; the first choice (normal mode) is the best choice for an average user. The second choice is advanced mode and requires knowledge of file types and systems.

Data Recovery Using Normal Mode

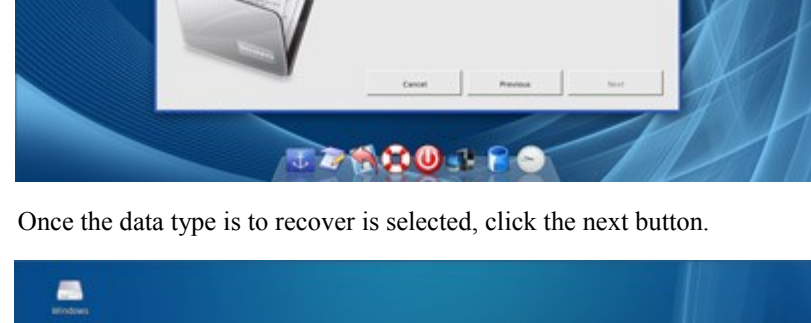


Select normal mode from the dialog box, another dialog box will appear asking for the types of data to recover.

One option can be selected at a time or alternatively there is a selection to recover all files.



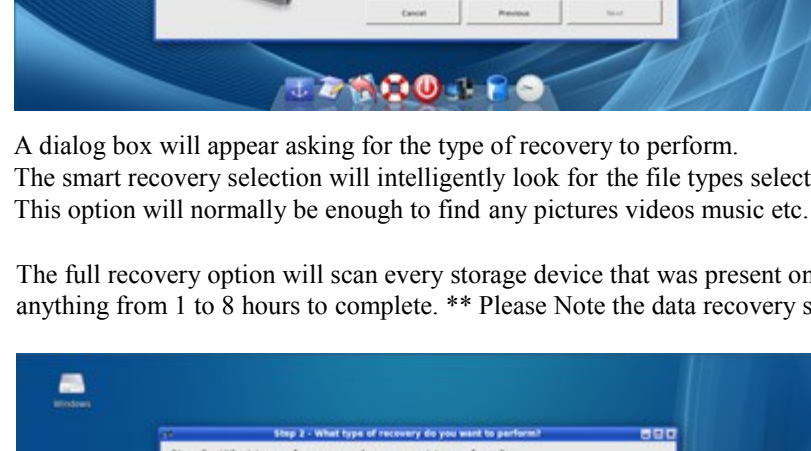
Once the data type to recover is selected, click the next button.



A dialog box will appear asking for the type of recovery to perform.

The smart recovery selection will intelligently look for the file types selected in folders like the My Documents and My Pictures folder. This option will normally be enough to find any pictures videos music etc.

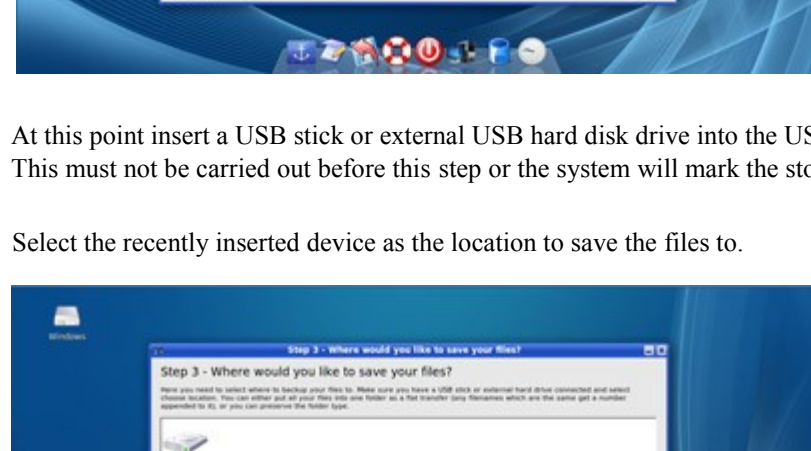
The full recovery option will scan every storage device that was present on start-up. Depending on the size of your hard disk drives this can take anything from 1 to 8 hours to complete. **** Please Note the data recovery system will even work for password protected accounts or directories.**



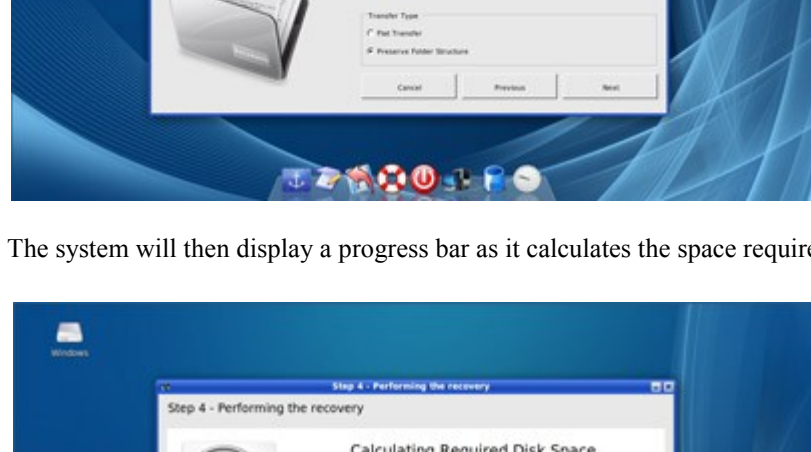
At this point insert a USB stick or external USB hard disk drive into the USB ports.

This must not be carried out before this step or the system will mark the storage device as read only (this is done to protect the source data).

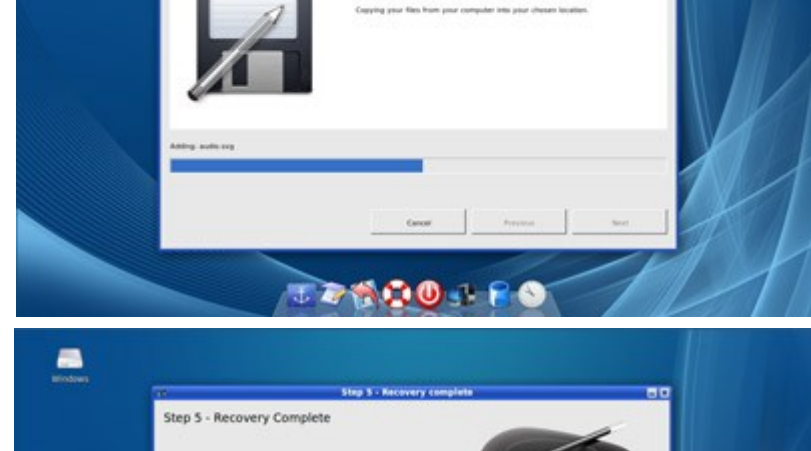
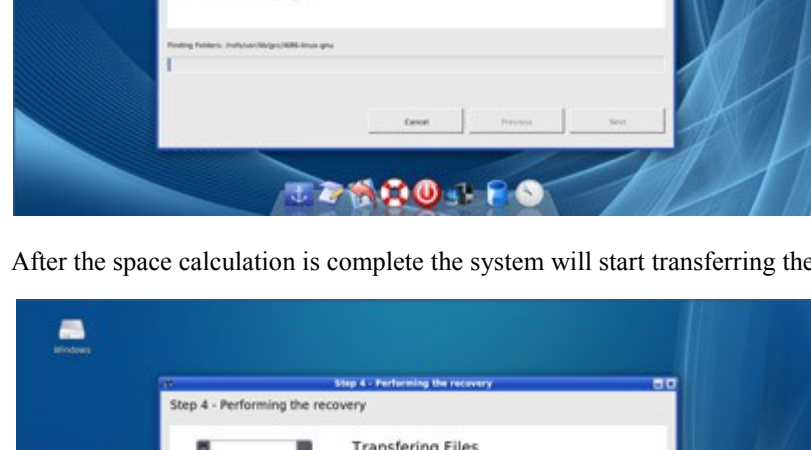
Select the recently inserted device as the location to save the files to.



The system will then display a progress bar as it calculates the space required to save the data.

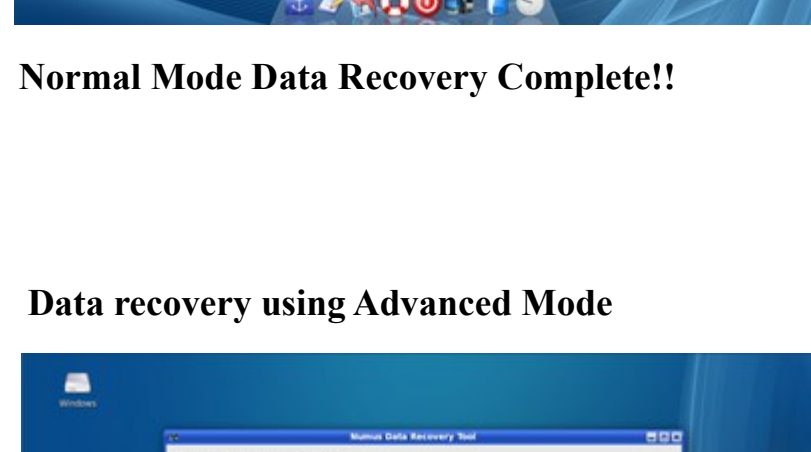


After the space calculation is complete the system will start transferring the files from the source to the destination device (this may take a while)



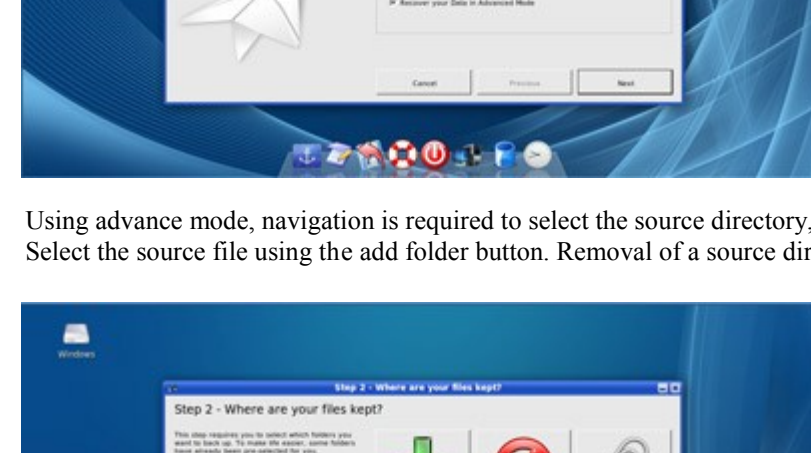
Normal Mode Data Recovery Complete!!

Data recovery using Advanced Mode

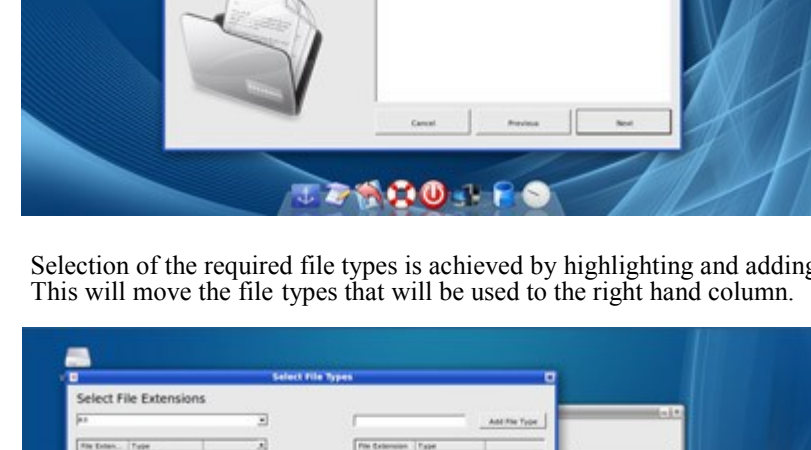


Using advance mode, navigation is required to select the source directory, device or devices.

The next step file, using the add folder button. Removal of files is carried out by selecting the remove folder button.

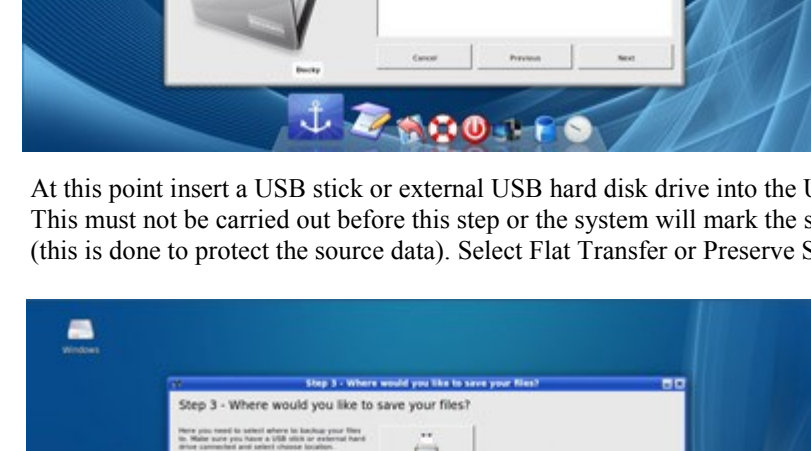


Selection of the required file types is achieved by highlighting and adding from the left hand list. This will move the file types that will be used to the right hand column.



At this point insert a USB stick or external USB hard disk drive into the USB ports.

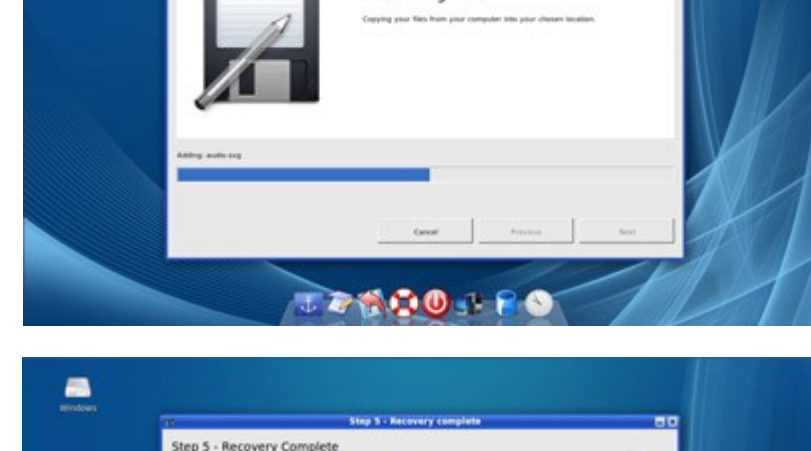
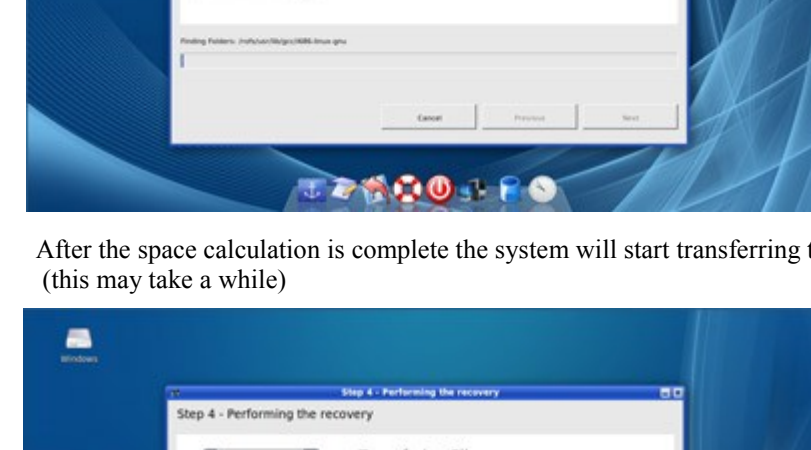
This must not be carried out before this step or the system will mark the storage device as read only (this is done to protect the source data). Select Flat Transfer or Preserve Structure and click next.



The system will then display a progress bar as it calculates the space required to save the data.



After the space calculation is complete the system will start transferring the files from the source to the destination device (this may take a while)



Advanced Mode Data Recovery Complete!!